



Bobcat®

Compact Equipment Tires



One Tough Animal™

Bobcat Compact Loader Pneumatic Tires



Severe Duty

When your jobsite demands an aggressive long-lasting tire, choose the Bobcat® severe duty tire. It's designed to take on more abuse than conventional tires, as well as provide superior self cleaning characteristics.

The deep tread depth significantly increases the tires' service life, while reducing downtime due to cuts and punctures. Bobcat severe duty tires are proven performers in construction, recycling, industrial, rental, and other severe job applications.

- High ply-ratings to minimize flats
- 44/32 inch tread depth, deep tread to maximize life
- 68% solid-to-void tread ratio, excellent on aggressive surfaces
- Strong sidewall protection against cuts and punctures



Heavy Duty

Increase your protection against punctures and cracks with the extra thick sidewalls on Bobcat heavy duty tires. They feature bead guards to shield against rim and sidewall punctures. The combination of superior quality, self-cleaning rubber, and high ply rating make these tires ideal for rough, high-hour applications such as rental, construction, landscaping and industrial jobs.

- Strong, durable tread compound resists chunking and separation
- Special bead guard offers great tire and rim protection
- Bobcat 3-step, self-cleaning tread for excellent traction
- Better wear and resistance to flats



Standard Duty

Designed for maximum traction and grip, the center lug of the Bobcat standard duty tire adds extra traction. These tires are created for long wear during normal machine-hour applications, such as agriculture, rental, landscaping, and general construction. The special rim guard and thick sidewalls provide outstanding protection against punctures. They're constructed with a unique blend of natural and synthetic rubber.

- Durable tread compound prevents downtime and increases productivity
- Thick sidewalls for greater puncture resistance
- Special rim guard for tire and wheel protection



Turf & Sand

Outfit your equipment with Bobcat turf & sand tires which offer excellent traction while minimizing damage and repairs to lawns. This tire works well when you need to be extra ground-conscious: golf courses, sugar sand, nurseries and landscaping.

Super Float

Keep moving in soft and wet soil conditions with Bobcat super float tires. They feature super wide tread and heavy sidewalls. At the recommended air pressure, these tires provide up to 85% more footprint area than conventional tires. These tires are ideal when working in parks, cemeteries, golf courses, nurseries, beaches and compost yards.



Model	Tire Size	Part No.	Type	Outside Diameter		Tire Width		Rim Diameter		Ply Rating	Rated Load lb. @ psi	Tread Depth		Tire Weight	
				in.	mm	in.	mm	in.	mm			32nds	mm	lb.	kg.
Skid-Steer Loader	5.7 x 12	7210943	Standard	23	584	5.7	145	12	305	4	1455 @ 60	15	12	15	7
	8.5 x 12	6661602	Heavy	23	584	8.5	216	12	305	6	1810 @ 50	13	10	26	12
	8.5 x 15	6729895	Standard	27	686	8.5	216	15	381	4	1940 @ 50	12	10	27	12
		6661603	Standard	27	686	8.5	216	15	381	6	2270 @ 50	13	10	33	15
		6667890	Heavy	27	686	8.5	216	15	381	8	2890 @ 60	15	12	38	17
	10.5 x 15	6680056	Turf	27	686	10.5	254	15	381	6	2610 @ 45	17	14	34	15
	10 x 16.5	6730106	Severe	31	787	10	254	16.5	419	10	3500 @ 45	44	35	76	34
		6729900	Heavy	31	787	10	254	16.5	419	10	3930 @ 55	19	15	50	22
		6729896	Standard	31	787	10	254	16.5	419	8	3930 @ 55	18	14	80	36
Skid-Steer Loader or All-Wheel Steer	12 x 16.5	6730108	Severe	33	838	12	305	16.5	419	12	4210 @ 40	44	35	85	39
		6729901	Heavy	33	838	12	305	16.5	419	12	5355 @ 60	21	17	77	35
		7219732	Heavy	33	838	12	305	16.5	419	10	5600 @ 65	22	17	79	36
		6729897	Standard	33	838	12	305	16.5	419	10	5350 @ 60	21	17	64	29
		7211382*	Float	31	787	12	305	16.5	419	10	4460 @ 55	19	15	62	28
	15.5 x 16.5	6678044*	Turf	33	838	15.5	394	16.5	419	10	4730 @ 32	18	14	80	36
		6730109*	Float	33	838	15.5	394	16.5	419	12	4990 @ 35	26	21	94	43
Skid-Steer Loader	14 x 17.5	7139189	Severe	36	914	14	356	17.5	445	14	5260 @ 35	44	35	130	59
		6675541	Heavy	36	914	14	356	17.5	445	14	8550 @ 80	24	19	102	46
		6667794	Standard	36	914	14	356	17.5	445	10	6850 @ 55	24	19	92	42

*See your local Bobcat dealer for complete details on rim requirements.

Bobcat Compact Loader Solid Tires



Eliminate downtime and money spent due to flat tires and enjoy longer tire life with Bobcat Solid Tires.

Bobcat Solid Tires

Designed to last at least three times longer than foam-filled pneumatic tires, Bobcat solid tires are made from an ultra tough, enhanced rubber mining compound. With a tear strength that is more than double the strength of most pneumatic tires, you will experience better resistant to cutting and chunking from debris. Bobcat solid tires are bonded to steel rims and ready to mount on your machine.

Twin Flex

Enjoy the durability of solid tires with the feel of a pneumatic tire ride provided by patented tear drop holes. Designed to reduce vibration and increase driver comfort, the progressive design of the tear drop holes maintain a circular shape under weight to resist stress point cracking, and increases overall tire life.

- Features R-4 deep traction tread design with self cleaning stepped lugs
- Agile tread design provides incredible traction and is well-suited for a variety of applications



Smooth Flex

Bobcat smooth flex tires provide the extended life of a solid tire, along with the feel of a cushioned ride foam filled pneumatic tire. An elliptical row of holes in the side reduces load stress on the tire and eliminates cracking.

- Larger contact surface of the smooth tread allows for more even wear and better traction
- Well-suited for dry, hard compact surface applications



Smooth & All Terrain Solid

Bobcat solid smooth tires are well-suited for dry, hard compact surface applications. Bobcat's all terrain tread design provides the ability to channel water away from the tires on wet surfaces. These tires are well-suited for dry or wet, hard compact surface applications.



Model	Style	Pneumatic Equivalent	Part No.	Base	Outside Dia.		Tire Width		Rim Dia.		Tread Depth		Rated Load	Weight	
					in.	mm	in.	mm	in.	mm	in.	mm		lb.	kg.
Skid-Steer Loader	Twin Flex	10 x 16.5	6903766	Left	31	787	10	254	18.5	470	1.9	48.3	7530	246	112
			6903767	Right											
		12 x 16.5	6903773	Left	33	838	11	279	20.7	526	2.4	61	7915	280	127
			6903774	Right											
		14 x 17.5	6988042	Left	36	914	11	279	22.7	577	2.8	71.1	8540	325	147
			6988043	Right											
			7001446	Left	36	914	11	279	22.7	577	2.8	71.1	8540	325	147
			7001447	Right											
All-Wheel Steer	Twin Flex	12 x 16.5	6904633	Left	33	838	11	279	20.7	526	2.4	61	7915	280	127
			6904634	Right											
Skid-Steer Loader	Twin Flex Offset Rim	10 x 16.5	6904637	Left	31	787	10	254	18.5	470	1.9	48.3	7335	254	115
			6904638	Right											
		12 x 16.5	6904635	Left	33	838	11	279	20.7	526	2.4	61	7915	280	127
			6904636	Right											
	Smooth Flex	10 x 16.5	6904630	Wide Base	31	787	9	229	20.7	526	2.4	61	5920	225	102
		800-16	6904631	Narrow Base	33	838	8	203	20.7	526	2.4	61	5500	232	105
		12 x 16.5	6904632	Wide Base	33	838	10	254	20.7	526	2.4	61	7335	254	115
	Smooth Solid	750-16	6903935	Narrow Base	31	787	7	178	20.7	526	2.9	73.7	5510	198	90
		800-16	6903937		33	838	8	203	20.7	526	2.4	61	7330	268	122
		10 x 16.5	6903939	Wide Base	31	787	9	229	20.7	526	2.9	73.7	7410	242	110
		12 x 16.5	6903941		33	838	10	254	20.7	526	2.4	61	9780	290	132
		10 x 16.5	7025304	Wide Base	31	787	10	254	20.7	526	2.4	61	8150	320	145
		14 x 17.5	7025305		33	838	11	279	22.7	526	4.7	119.4	9330	420	191
	All Terrain Solid	750-16	6903936	Narrow Base	31	787	7	178	20.7	526	2.9	73.7	5510	192	87
		800-16	6903938		33	838	8	203	20.7	526	2.4	61	7330	255	116
		10 x 16.5	6903940	Wide Base	31	787	9	229	20.7	526	2.9	73.7	7410	242	110
		12 x 16.5	6903942		33	838	10	254	20.7	526	2.4	61	9780	278	126

Toolcat, Utility Vehicle, and VersaHandler Tires



Toolcat® Utility Work Machine

In the park or on the farm, Bobcat® Toolcat tires provide rider comfort with maximum performance. Choose from general purpose tires for use in a variety of applications, turf tires for landscaping applications, or the float tire when good flotation is needed along with traction.

Model	Style	Part No.	Type	Outside Dia.		Tire Width		Rim Diameter		Ply Rating	Rated Load		Weight	
				in.	mm	in.	mm	in.	mm		lb. @ psi	lb.	kg.	
5600	General	6680056	Standard	27	686	10.5	267	15	381	6	2610 @ 45	33	15	
	Turf	6682461	Standard	27	686	10.5	267	15	381	10	2200 @ 75	38	17	
5600 5610	General Purpose	7023289	Standard	27	686	10.5	267	15	381	8	3130 @ 60	43	19	
		7023288	Standard	29	737	10.5	267	15	381	10	4470 @ 75	47	21	
	Turf	7166360	Standard	29	737	12.5	318	15	381	8	2150 @ 45	48	22	



Turf

Utility Vehicle

Whether you're hitting the trail or hauling a load, Bobcat offers a selection of tire styles to fit the different applications of your Bobcat utility vehicle.

Model	Style	Part No.	Type	Outside Dia.		Tire Width		Rim Diameter		Ply Rating	Rated Load	Weight	
				in.	mm	in.	mm	in.	mm		lb. @ psi	lb.	kg.
2100, 2100S, 2200, 2200H	All Terrain	102021302CC	Stand.	23	584	12	305	12	305	4	1340 @ 20	24	11
2100, 2100S	Turf	102021307CC	Stand.	23	584	10.5	267	12	305	4	1340 @ 10	13	6
2200, 2200H	All Terrain	102021305CC	Stand.	23	584	12	305	12	305	4	1125 @ 22	20	9
	Mud Tread	102021306CC	Stand.	23	584	12	305	12	305	4	1200 @ 22	17	8
2200, 2200BH, 2200S, 2300	All Terrain	102943101CC	Stand.	25	635	12	305	12	305	4	1570 @ 20	25	11
	Mud Tread	102945701CC	Stand.	25	635	12	305	12	305	4	1480 @ 22	21	9.5
3200, 3400, 3400XL, 3450	All Terrain	7019207 - Front	Stand.	25	635	12	305	8	203	4	420 @ 7	19	9
	Turf	6989065 - Front	Stand.	25	635	9.5	241	8	203	4	1520 @ 24	18	8
	All Terrain	7019208 - Rear	Stand.	25	635	12	305	8	203	4	455 @ 7	21	9.5
	Turf	6989066 - Rear	Stand.	25	635	11	279	8	203	4	1820 @ 24	22	10



All Terrain

VersaHandler TTC

The stability, balance, and traction offered by our engineering approved tire is crucial to the proper operation of your Bobcat VersaHandler telescopic tool carrier.

Model	Part No.	Type	Outside Dia.		Tire Width		Rim Diameter		Ply Rating	Rated Load	Weight	
			in.	mm	in.	mm	in.	mm		lb. @ psi	lb.	kg.
V417	6920685	Standard	35	889	14	356	17.5	445	14	5357 @ 80	80	36
V638	6914739	Standard	50	1270	13	330	24	610	12	12,300 @ 65	161	73
V518, V723	6909321	Standard	42	1067	15.5	394	20	508	10	7400 @ 61	163	74
V518, V623, V723	100425-12Z	Ag/Industrial	42	1067	16	406	20	508	15	7385 @ 58	157	71
V638, V723	96332-2	Ag/Industrial	49	1245	15.8	401	24	610	-	8818 @ 69	198	89
V723	6909327	Ag/Industrial	50	1270	15.5	394	24	610	14	7605 @ 69	150	68



Ag/Industrial

Measurements are in inches unless otherwise noted. Some measurements have been rounded to the nearest number. Use tires with the correct load rating for proper operation. IMPORTANT: Inflate tires to the maximum pressure shown on the sidewall of the tire. Do not inflate the tires above the recommended pressures shown in the Operation & Maintenance Manual, or on the side of the tire. Check tire pressure frequently and always maintain the correct tire pressure. WARNING: AVOID INJURY OR DEATH. Do not inflate tires above specified pressure. DO NOT mix brands of tires used on the same equipment. Check tires regularly for wear, damage and pressure. The rim flange must be cleaned and free of rust. WARNING: AVOID INJURY OR DEATH. Do not attempt to mount, or repair, a tire on the rim. This must be done by qualified personnel with the proper equipment. Failure to use correct tire mounting procedure can cause an explosion which can result in injury or death.

Bobcat Compact Tractor Tires



Turf

Maintain your lush lawn by using turf tires on your Bobcat® compact tractor. While other tires may gouge and damage your lawn, turf tires are designed with less aggressive tread that minimizes harm.

- Great tread depth and more rubber on the contact surface to provide increased puncture resistance and longer tire life
- Shoulder design minimizes turf damage
- Leaves minimal tire marks, even when the ground is wet



General Purpose

Deliver long-lasting traction on your Bobcat compact tractor with general purpose tires. They are built tough to resist buckling, tearing and cracking.

- Extra wide lugs with extensive overlap at the center, designed to resist buckling, tearing and cracking
- Excellent tread wear and roadability, the laterally designed lugs for even wear
- High strength construction gives it exceptional durability
- R124 lug design



Agricultural

When you need your Bobcat compact tractor to deliver power and traction, install agricultural tires. With decreased operator vibration from their symmetrical lug pattern, the agricultural tire is a great tire when transporting loads.

- Unique long bar/medium bar tread pattern
- Symmetrical lug pattern to eliminate side-to-side rocking and promotes even wear



Model	Style	Tire Loc.	Part No.	Type	Outside Dia.		Tire Width		Rim Dia.**		Ply Rating	Tread Depth		Rated Load	Weight	
					in.	mm	in.	mm	in.	mm		32nds	mm	lb. @ psi	lb.	kg.
CT120 CT122	Turf	Front	7149993	Stand.	23	584	8.5	216	12	305	4	12	10	1115 @ 22	20	9
		Rear	7149994		33	838	12.5	318	16.5	419	4	12	10	2305 @ 30	55	25
	Ag	Front	7155763	Stand.	23	584	6	152	12	305	6	20	16	760 @ 42	15	7
		Rear	7149996		33	838	9.5	241	16	406	6	40	32	1390 @ 30	50	23
	General Purpose	Front	7149997	Stand.	23	584	8.5	216	12	305	4	14	11	1470 @ 35	27	12
		Rear	7149998		33	838	12	305	16.5	419	6	23	18	4220 @ 40	66	30
CT225 CT230 CT235	Turf	Front	7151602	Stand.	27	686	8.5	216	15	381	4	11	9	1230 @ 30	26	12
		Rear	7151603		41	1041	14	356	20	508	4	22	18	3080 @ 25	100	45
	Ag	Front	7155766	Stand.	27	686	7	178	14	356	8	28	22	1170 @ 48	28	13
		Rear	7150639		43	1092	11.2	285	24	610	6	43	34	2090 @ 26	99	45
	General Purpose	Front	7150640	Stand.	25	635	8.5	216	14	356	6	17	14	2000 @ 50	31	14
		Rear	7150641		40	1016	15	381	19.5	495	8	26	21	7250 @ 40	111	50
CT335	Turf	Front	7165234	Stand.	27	686	8.5	216	15	381	10	11	9	2875 @ 30	26	12
		Rear	7166362		46	1168	21.5	546	16.1	409	4	24	19	3520 @ 12	134	61
	Ag	Front	7165219	Stand.	30	762	7	178	16	406	10	30	24	2545 @ 78	28	13
		Front	7166354		30	762	8	203	16	406	10	29	23	3495 @ 62	38	17
		Rear	7165217		46	1168	12.4	315	24	610	8	44	35	2830 @ 32	112	51
	General Purpose	Front	7165228	Stand.	27	686	10.5	267	15	381	6	17	14	2610 @ 45	38	17
		Rear	7165230		43	1092	16	406	20	508	4	26	21	4540 @ 20	126	57
CT440 CT445 CT450	Turf	Front	7166360	Stand.	29	737	12.5	318	15	381	8	12	10	2150 @ 45	45	20
		Rear	7166362		44	1118	21.5	546	16.1	409	4	24	19	3520 @ 12	134	61
	Ag	Front	7166354	Stand.	30	762	8	203	16	406	10	29	23	3495 @ 62	38	17
		Rear	7166352		47	1194	13.6	345	24	610	6	46	37	2680 @ 22	130	59
	General Purpose	Front	7165370	Stand.	30	762	10	254	16.5	419	6	19	15	3500 @ 45	48	22
		Rear	7165371		49	1245	14.9	379	24	610	8	34	27	5080 @ 30	146	66

**See your local Bobcat dealer for complete details on rim requirements on all Bobcat compact tractor tires. See your Compact Tractor Operation & Maintenance Manual for more information regarding tire load rating requirements and recommended tire inflation pressures for your Compact Tractor.

EarthForce Compact Loader Tires



Severe Duty

The reinforced sidewalls protect the EarthForce™ non-directional tire against costly sidewall damage. The extra wide foot print provides high flotation and super stability, while the thick ply ratings add extra durability.

Standard Duty

The EarthForce standard duty tire features a durable tread pattern for high flotation and great stability. They are designed for resistance to chunking and tearing.

Tire Size	Part No.	Type	Outside Dia.		Tire Width		Rim Diameter		Ply Rating	Rated Load lb. @ psi	Tread Depth		Tire Weight	
			in.	mm	in.	mm	in.	mm			32nds	mm	lb.	kg.
10 x 16.5	6988143	Severe	31	787	10	254	16.5	419	12	5095 @ 87	34	27	77	35
	6988500	Stand.	31	787	10	254	16.5	419	8	4145 @ 61	16	13	47	21
	7024212	Heavy	31	787	10	254	16.5	419	12	5225 @ 90	21	17	63	28.5
12 x 16.5	6988144	Severe	33	838	12	305	16.5	419	14	6195 @ 81	42	34	94	43
	6988501	Stand.	33	838	12	305	16.5	419	10	5335 @ 61	19	15	59	27
	7024213	Heavy	33	838	12	305	16.5	419	14	6765 @ 90	26	21	88	40
14 x 17.5	6988145	Severe	36	922	14	356	17.5	445	14	8545 @ 80	48	38	145	66
	6988502	Stand.	36	922	14	356	17.5	445	16	8860 @ 91	22	18	112	51



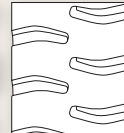
EarthForce Solid Press-on

With sidewalls that are designed to prevent cuts and cracks in aggressive terrain, EarthForce solid press-on tires offer a durable, cost efficient solution for your equipment. The air-cushioned ride eases machine shock for maximum performance and driver comfort with a partially pneumatic tire design. They are created with heavy duty rubber compounds for increased service life.

- Deep lug treads provide traction in an assortment of terrains
- Great shock absorption for machine longevity and operator comfort
- Super smooth tires also feature air-cushioned design
- Rimless replacement tires available



Dirt Terrain



All Terrain



Super Smooth



Style	Pneumatic Equivalent	Part No.	Base	Outside Dia.		Tire Width		Rim Dia.		Tread Depth		No. of Bolt Holes	Rated Load	Weight	
				in.	mm	in.	mm	in.	mm	in.	mm		lb.	lb.	kg.
Dirt Terrain with Rim	8.5 x 12	7023560	Left	23	584	8	203	12	305	0.8	20	5	3310	101	46
		7023561	Right												
Dirt Terrain with Rim	8.5 x 15	7023562	Left	27	686	8	203	15	381	0.8	20	6	4410	143	65
		7023563	Right												
Dirt Terrain without Rim	8.5 x 15	6988682	-	30	762	8	203	-	-	1.5	38	6	4190	160	72.5
Dirt Terrain with Rim		6988683***	Left					16	406						
		6988684***	Right												
Dirt Terrain with Rim	8.5 x 16	6988680	Left	30	762	8	203	16	406	1.5	38	8	4190	160	72.5
		6988681	Right												
Orange Non-Marking Dirt Terrain with Rim	10 x 16.5	7022983	Left	30	762	10	254	16	406	1.5	38	8	4850	180	81.5
		7022984	Right												
Dirt Terrain with Rim		6988512	Left												
		6988513	Right												
Dirt Terrain without Rim		6988514	-					-	-						
Super Smooth without Rim	10 x 16.5	6988511	-	31.5	800	8	203	-	-	no lug	no lug	-	5370	215	97.5
Super Smooth with Rim		6988510	-					16	406			8			
Dirt Terrain with Rim	12 x 16.5	6988524	Left	32.25	820	15	381	16	406	2.5	57	8	11,020	350	157.5
		6988525	Right									-			
Dirt Terrain without Rim		6988526	-					-	-						
Dirt Terrain with Rim	12 x 16.5	6988515	Left	33	838	12	305	16	406	2	51	8	8270	250	113
		6988516	Right									-			
Dirt Terrain without Rim		6988517	-					-	-						
Dirt Terrain with Rim		7024824	Left	33	838	12	305	16	406	2	51	8	8250	270	123
			7024823									Right			
Orange Non-Marking Dirt Terrain with Rim		7022985	Left	33	838	12	305	16	406	2	51	8	8270	250	113
			7022986									Right			
All Terrain with Rim		6988518	-	33	838	12	305	16	406	2.67	56	8	8270	229	104
All Terrain without Rim		6988520	-									-			
Dirt Terrain without Rim	14 x 17.5	6988523	-	36.5	927	14	356	-	-	2	51	-	10,580	420	190.5
Dirt Terrain with Rim		6988947***	Left					20	508			10			
		6988948***	Right												
Dirt Terrain with Rim	14 x 17.5	6988521	Left	36.5	927	14	356	20	508	2	51	8	10,580	420	190.5
		6988522	Right									-			
Dirt Terrain with Rim	14 x 17.5	7024853	Left	36.5	927	14	356	20	508	2	51	8	10,580	436	198
		7024854	Right									-			

Equipment height may vary with some styles of EarthForce solid press-on tires. ***See your Bobcat dealer for rimless replacement tires and complete details on rim requirements.

**Severe Duty****Heavy Duty****Standard Duty**

Severe Duty

Tire Features

- Extra wide foot print for high flotation and super stability
- Reinforced sidewall with curb and rib guard to provide extra protection against rim and sidewall damage
- Big, non-directional lugs deliver excellent traction on hard compact surfaces, better impact, and cut resistance
- Thick ply ratings add extra durability
- Deep tread depth to maximize tire life

Customers

- High machine hours
- Very rough wear and tear on tires (very aggressive)

Applications

- High hour rental
- Recycling
- Construction
- Industrial
- Other aggressive jobs

NEW! Heavy Duty II

Tire Features

- 3-step tread design maximizes traction with efficient self-cleaning when operating in wet conditions
- Durable performers with excellent ply ratings and bead guard defense for better resistance to flats due to curb hits
- Heavy sidewall protection, extra heavy carcass and center bar reinforcement reduces bounce
- Special rim guard offers extra protection against sidewall damage

Customers

- Medium to high machine daily job hours
- Rough wear and tear on tires (aggressive)

Applications

- Agriculture
- Personal use
- High hour rental
- Landscaping
- Construction
- Industrial
- Snow removal
- Street cleaning
- Other heavy duty jobs

Standard Duty

Tire Features

- Durable tread pattern developed for high flotation and great stability.
- Designed to resist chunking and tearing.

Customers

- Lower to medium machine hours
- Normal wear and tear on tires (not too aggressive)

Applications

- Agriculture
- Rental
- Landscaping
- General construction
- Other light duty jobs

Model	Tire Size	Part No.	Type	Outside Dia.		Tire Width		Rim Diameter		Ply Rating	Max. Load	Tread Depth		Tire Weight	
				in.	mm	in.	mm	in.	mm		lb. @ psi	32nds	mm	lb.	kg
Severe Duty															
Skid-Steer Loader	10 x 16.5	6988143	Severe	30	722	10	356	16.5	419	12	5095 @ 87	34	27	77	35
Skid-Steer Loader, All-Wheel Steer	12 x 16.5	6988144	Severe	33	831	12	305	16.5	419	14	6195 @ 81	42.2	34	94	43
Skid-Steer Loader	14 x 17.5	6988145	Severe	36	922	14	254	17.5	445	14	8545 @ 80	47.2	38	147	66
NEW! Heavy Duty II															
Skid-Steer Loader	10 x 16.5	7024212	Heavy	31	787	10	254	16.5	419	12	5225 @ 90	21	17	63	28.5
Skid-Steer Loader, All-Wheel Steer	12 x 16.5	7024213	Heavy	33	838	12	305	16.5	419	14	6765 @ 90	26	21	88	40
Standard Duty															
Skid-Steer Loader	10 x 16.5	6988500	Stand.	30	772	10	254	16.5	419	8	4145 @ 61	16	13	47	21
Skid-Steer Loader, All-Wheel Steer	12 x 16.5	6988501	Stand.	33	831	12	305	16.5	419	10	5335 @ 61	19	15	59	27
Skid-Steer Loader	14 x 17.5	6988502	Stand.	36	922	14	356	17.5	445	16	8860 @ 91	22	18	112	51

EarthForce Non-Directional Severe Duty Tires are NOT approved for use on offset rims.