



PF-150C



The PF-150C is a heavy-duty, wheel-mounted, paver/finisher, capable of placing bituminous base, binder and surface course mixes, wccement or lime-stabilized sub-base and graded aggregate materials.

Successfully complete complex projects comfortably. The PF-150C provides low owner and operating costs while meeting goals for productivity, reliability, and excellent mat quality.

KEY FEATURES

- ✓ **Wheel-Mounted Mobility**—Smoother, quieter operation and faster travel speeds with less maintenance.
- ✓ **74 HP (55 kW) Kubota V3674 T4i Turbo Diesel Engine.**
- ✓ **Paving Widths to 16' (4.9 m)**—Increased production results from expanded width capability (requires (2) one foot extensions).
- ✓ **Top Side Operator Control Stations**—Provide a cooler, cleaner operating environment and optimum visibility.
- ✓ **SureHeat® Screed Systems**—Provides quick, reliable heat to the screed. Push-button activated, auto-off.
- ✓ **Hydrostatic/Direct Traction Drive**—(2) Speed propulsion system provides a precise match of ground speed to operating requirements.
- ✓ **Traction Lock System**—Provides full-time tractive effort at both drive wheels.
- ✓ **Switch-Actuated Pivot Steer**—Provides superior maneuverability in tight quarters.
- ✓ **Dual Independent Feed Systems**—Precise control of material flow throughout the entire paving range for superior mat quality.
- ✓ **High Efficiency 12" (305 mm) Diameter Augers**—Equipped with replaceable, abrasion-resistant, cast steel segments on flights and shafts for maximum service life.
- ✓ **Proportional Sonic Feed Controls**—Standard
- ✓ **Tow-Point Control**—Easy, switch activated, material thickness control.
- ✓ **Four-Zone Screed Vibration**—0-2800 vpm (0-47 Hz) improves material flow, mat texture, and density.
- ✓ **Easy Access Serviceability**—Service points are grouped and positioned for convenience.
- ✓ **Closed Center Hydraulics**—Cooler running, longer life components and increased fuel economy.
- ✓ **Greased for Life Conveyor Bearings**—Eliminates daily greasing forever.
- ✓ **120V Duplex AC Outlet**—Standard

STANDARD FEATURES PF-150C

TRACTOR

Direct Hydrostatic Traction Drive: Enables smooth reliable shifting capabilities and ease of service.

Traction Lock System: An electronically controlled positive traction, dual planetary drive.

Traction Drive: Independent, hydrostatic direct drive system with electrohydraulically controlled, single speed planetaries and 2-speed motors. Speed selection is infinitely variable in each of two speed ranges:
Low Range @ 2400 rpm 0-220 fpm (67.0 m/min)
High Range @ 2400 rpm 0-8.5 mph (13.7 km/hr)
Reverse . . . Full reverse in both of the two speed ranges.



Powerful Engine: Kubota (4) cylinder, V3674 T4i, 220 cu.in. (3.6 L) water-cooled, turbo diesel engine develops 74 hp (55 kW) @ 2600 RPM. Air cleaner with replaceable element, replaceable oil filter and diesel fuel filter, 60 amp alternator. Engine throttle is manually adjustable, up and down, with a momentary switch.



Cooling System: Multi-wing fan, pitch configured for optimized systems cooling. Capacity is 4 gallons (15.3 L).

Brakes: Primary braking is accomplished through the dynamics of the hydrostatic traction drive system. Integral fail-safe, spring-applied, hydraulic-released parking brake.

Suspension: Front—Two steerable wheels, each equipped with a 12" (305 mm) wide x 22" (559 mm) diameter solid rubber tire for maximum flotation and optimum weight distribution.

Rear—Two large 14:00 x 20 high flotation heavy-duty, pneumatic tires, hydroflated to provide maximum tractive effort.

Pivot Steering: An electrical switch on the operator's console hydraulically destroys the respective right or left side traction pump to the neutral position for power assisted steering in confined quarters.

CONTROLS

Controls: Operator platform and movable console enables operation from either side of the platform providing optimum visibility and comfort.

Control console functions include main power and starter switches, steering, throttle, horn, dual feed systems, screed vibrators, hopper lift, screed lift, neutral start/travel and pivot steering switch.



MATERIAL HANDLING



Dual Feed Systems: Separate hydrostatic drive for left and right side feed systems provide optimum auger-conveyor operation through the machine's entire capability range. Left and right proportional systems function independently and operation is controlled either manually with electrical switches on the operator's console or automatically by sonic sensing systems positioned at the outer end of each screed extension.

Push Rollers: Beam-mounted, weighted, and oscillating.

Power Flow Gates: Two individually operated, electrohydraulically controlled, adjustable flow gates, located in the conveyor tunnel entrance, at the rear of the hopper, meter material delivery to the augers.

Conveyor: Shafts, bearings, seals and drive elements are oversized for extended service life. Dual conveyors have channel drag bars riveted to their heat treated chains.

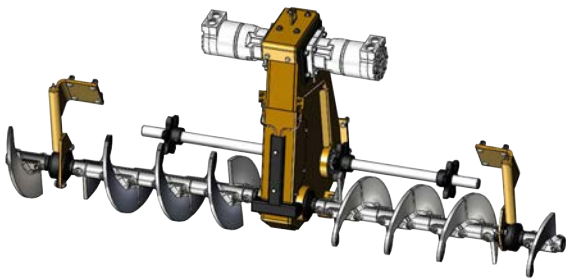
AUGERS



Augers: Replaceable, abrasion resistant, cast steel segments on flights and shafts for maximum service life.

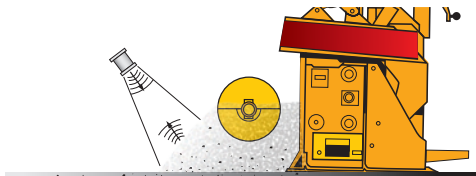
Auger Diameter 12" (305 mm)
Auger Flight Thickness 0.5" (13 mm)
Auger Speed Maximum 115 rpm

Optional Auger and Tunnel Kit: Two-Position—16"/22" (406/559 mm)—bolt-on tunnel extension, on left and right side of the paver, accurately control the head of material.



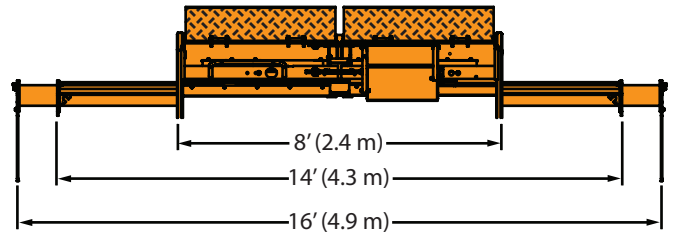
Auger Feed Assembly: The unitized modular design of the rear feed section (center chain case, left and right side planetary drives, rear conveyor shafts and auger assemblies) allows easy service access.

Automatic Feed System Control: The feed system is modulated by sonic non-contact sensors. The sonic system automatically controls the operating speed of the dual feed systems.



SCREED

New wider, heavy-weight WL screed: High density balanced screed design provides excellent surface texture and material consolidation. Pave up to 14' (4.3 m) wide hydraulically and 16' (4.9 m) wide with (2) 12" (305 mm) bolt-on extensions.



Standard paving width 8' - 14' (2.4 - 4.3 m)
Extended paving width with (2) 12" bolt-on extensions . 16' (4.9 m)
Paving depth range 1/4" - 6" (6 - 152 mm)
Center crown 3/8" (76 mm) positive to 3/4" (19 mm) negative
Hydraulically powered generator powers (6) six screed mounted heating elements.

Four Zone Screed Vibration: Two self-contained vibrators on the main screed and one on each extension (0-2,800 vpm) (0-47 Hz) provide material flow, smooth mat texture and density.

The two telescoping hydraulic screed extensions (one on each end of the main screed) are equipped with integral 6 3/4" (171 mm) deep replaceable screed plates.

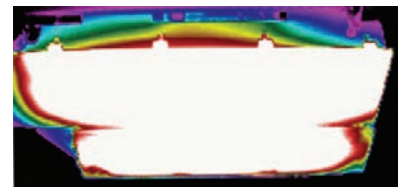
Power slope: Adjustment range is up to 1" (25 mm) in 12" (305 mm) positive at any extended width.

Power crown: Hydraulic assist permits easy adjustment of lead and tail crown.

Tow-Point Control: 8" (203 mm) stroke cylinder, electrohydraulic control for easy material thickness adjustment through angle of attack.

Power system: A 10 kW, tractor-mounted, hydraulically-powered, generator has a primary purpose of providing screed heat. Secondary 120V AC power is available through a circuit breaker-protected, duplex power outlet.

Heat: Multiple unitized, SureHeat® heat elements, on the main screed and on each extendible section, provide fast, even heat distribution to the entire screed base regardless of extension position.

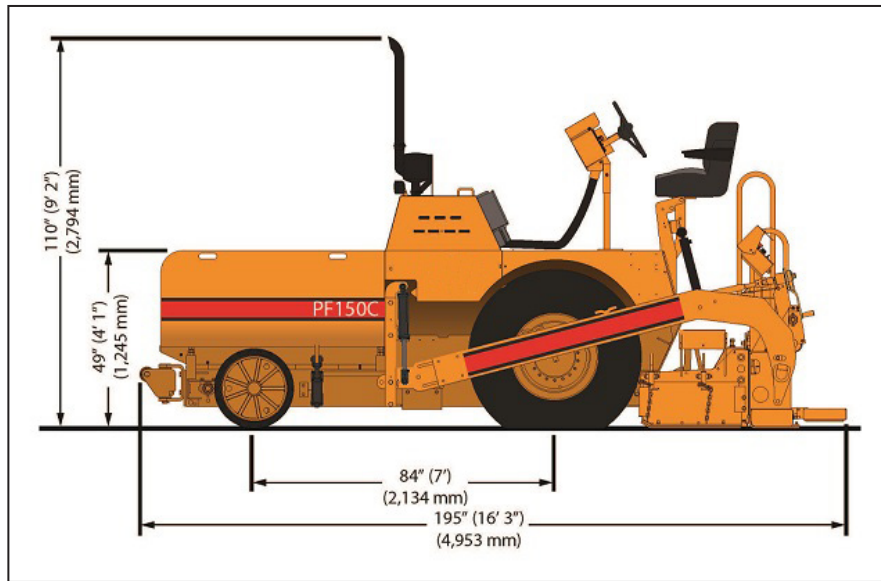


OPTIONAL EQUIPMENT

- ✓ 10' Auger & Tunnel Kit
- ✓ 12' Auger & Tunnel Kit
- ✓ 12" Heated Screed Extensions
- ✓ Additional cutoff plate & extension
- ✓ Topcon System P-32 dual grade
- ✓ Topcon System P-32 dual grade & slope
- ✓ Screed remotes
- ✓ Operator's umbrella
- ✓ Wired Screed Remotes



SPECIFICATIONS



PF-150C

May depict optional equipment.

Tractor Width (hopper sides up)	8' 2 1/4" (2.5 m)
Tractor Width (hopper sides down)	10' 5" (3.2 m)
Paving Depth	1/4" - 6" (6 - 152 mm)
Paver Capacity	8 T, 129 ft ³ (7.1 t, 3.7 m ³)
Gage Width (center to center of drive wheels)	77.75" (1975 mm)
Wheelbase	84" (2134 mm)
Turning Radius	9' 10 3/8" (3.0 m)
Length-Overall with WL Screed	15' 3" (4.7 m)
Weight-Tractor Only	12,290 lb (5,575 kg)
Weight-Total with WL Screed	15,565 lb (7,060 kg)
Electrical System	12 Volt, negative ground with 60 amp alternator. Wiring is color coded and harness wrapped in polyethylene looms for maximum durability.
Hydraulic System	24 gallon (91 L) reservoir capacity.
Washdown System	A pressurized, 7 gallon (26.5 L) release agent washdown system with 25' (7.6 m) hose and spray valve/nozzle, mounted on a self-storing, spring retracting reel.
Fuel Capacity	30 gallon (114 L)

Custom Options: Consult factory.



LB Performance Paving Products
 500 Lincoln County Parkway Ext
 Lincolnton, NC 28092
 Tel: 704.745.2529
 Fax: 704.745.2530
www.lbperformancepaving.com

LBP makes continuous improvements in all of its products. We reserve the right to change specifications without notice. Photos and illustrations may contain standard and optional equipment.

PF-150C